

## PL2303 USB-to-Serial Bridge Chip Family Windows Driver Installer User Manual

### WHQL Driver Version Information

- ❖ Driver Installer & Build date: **1.14.0 (2016-08-02)**
  - GUID: ECC3713C-08A4-40E3-95F1-7D0704F1CE5E
- ❖ **WHQL WDM Driver: v2.1.51.238 (10/22/2013)**
  - Windows 2000, XP, Server 2003 (32 & 64-bit)
  - <https://sysdev.microsoft.com/en-US/Hardware/LogoVerificationReport.aspx?sid=1616428>
- ❖ **WHQL WDF Driver: v3.8.1.3 (07/05/2016)**
  - Windows 10 TH1/TH2/RS1 (32 & 64-bit)
  - Windows Vista, 7, 8, 8.1 (32 & 64-bit)
  - Windows Server 2016 (64-bit)
  - Compatible with Windows Server 2008, 2008R2, Server 2012, Server 2012R2 (64-bit)
  - <https://sysdev.microsoft.com/en-US/Hardware/LogoVerificationReport.aspx?sid=1876379>
  - Drivers automatically install via Windows Update (need Internet connection)

### System Requirements

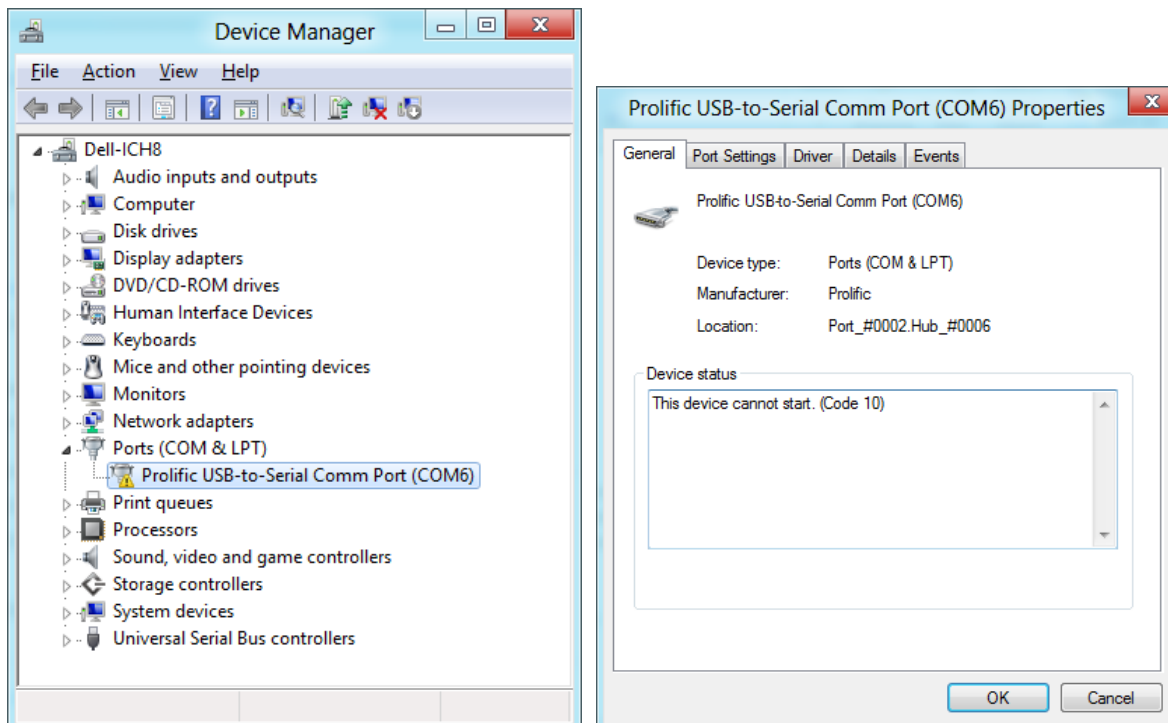
- ❖ PC with USB 1.1/2.0/3.0/3.1 Host Controller (USB Port) and Windows OS.
- ❖ USB Device with below PL-2303 chip versions and their supported OS Family:

Chip Version	Windows 2000 / XP Server 2003 (32 & 64 bit)	Windows Vista / 7 Server2008/R2 (32 & 64 bit)	Windows 8 / 8.1 Server2012/R2 (32 & 64 bit)	Windows 10 TH1/TH2/RS1 Server 2016 (32 & 64 bit)
PL-2303H	Yes	Yes	Not Supported*	Not Supported*
PL-2303HX (Rev A)	Yes	Yes	Not Supported*	Not Supported*
PL-2303X or XA	Yes	Yes	Not Supported*	Not Supported*
PL-2303HX (Rev D) or HXD	Yes	Yes	Yes	Yes
PL2303TA	Yes	Yes	Yes	Yes
PL2303TB	Yes	Yes	Yes	Yes
PL2303EA	Yes	Yes	Yes	Yes
PL2303RA	Yes	Yes	Yes	Yes
PL2303SA	Yes	Yes	Yes	Yes

\* - PL2303H, PL-2303HX (Rev A), and PL-2303X are EOL and discontinued chips and Prolific will not provide Windows 8 (and above versions) driver support. New driver versions will show yellow mark (Error Code 10) in Device Manager for these EOL chip versions under Windows 8 or above OS versions.

## Counterfeit Warning!!!

Please be warned that counterfeit/fake PL-2303HX Rev A (or PL-2303HXA) USB-to-Serial Controller ICs using Prolific's trademark logo, brandname, and drivers, are being sold in the China market. Counterfeit IC products show exactly the same outside chip markings but generally are of poor quality and causes Windows driver compatibility issues (**Yellow Mark Error Code 10 in Device Manager under WinXP, Vista, and 7**). This warning is issued to all customers and consumers to avoid confusion and false purchase. **Please purchase only from stores or vendors providing technical and RMA support.**



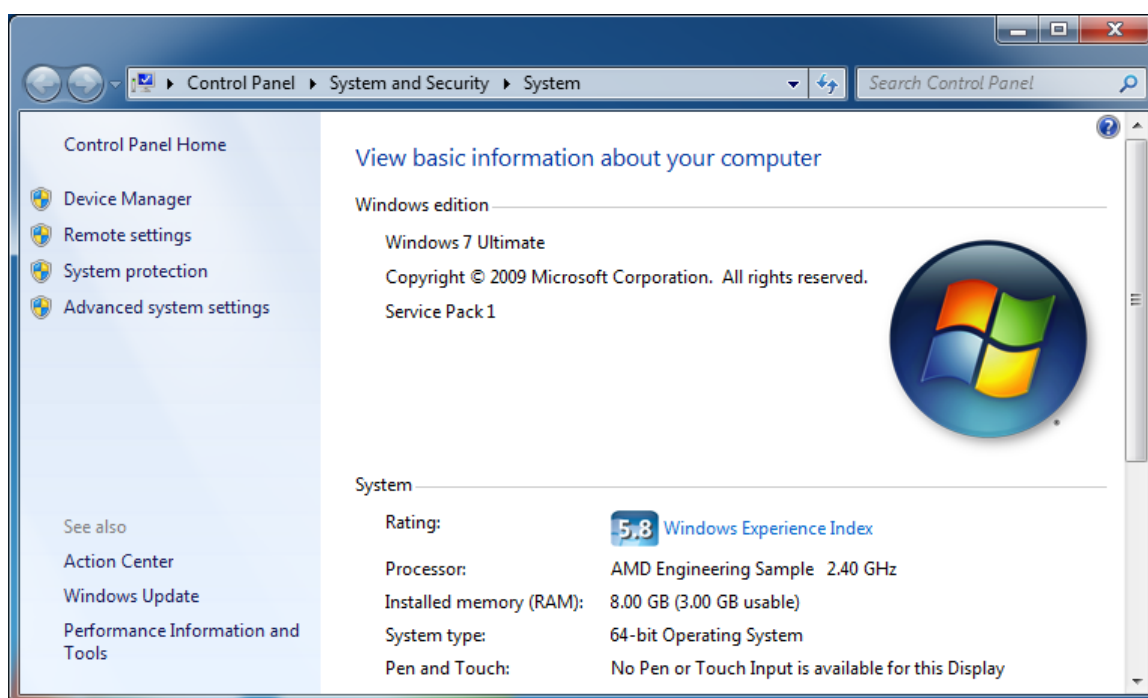
## Windows 7 Driver Installation

This section will guide you on how to install the PL-2303 Windows Driver. You can download the latest Driver Installer program from Prolific Support website:

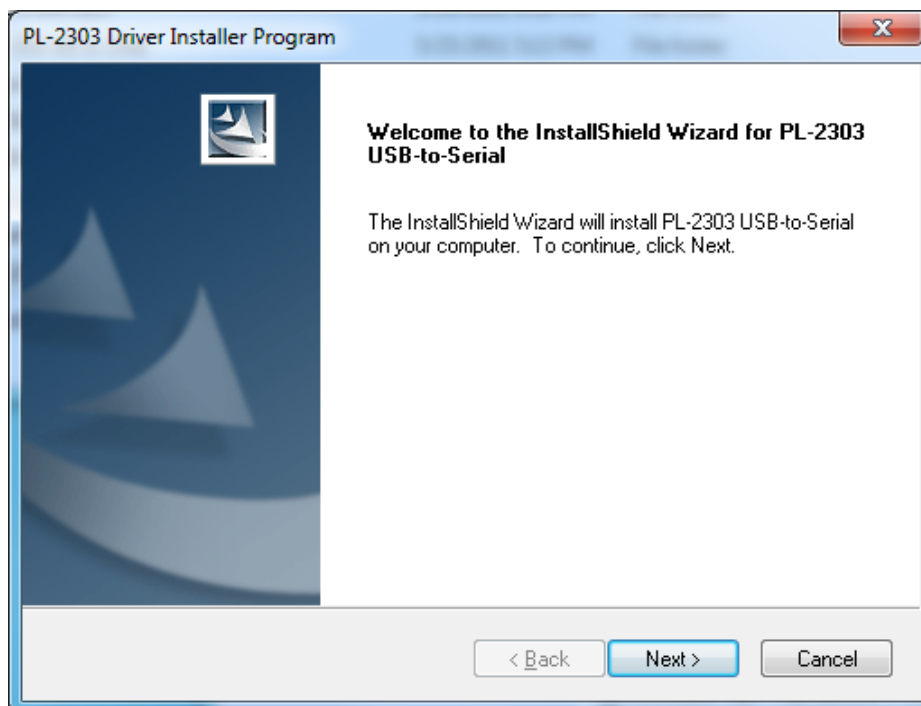
[http://www.prolific.com.tw/US/ShowProduct.aspx?p\\_id=225&pcid=41](http://www.prolific.com.tw/US/ShowProduct.aspx?p_id=225&pcid=41)

**Note:** Please take notice of the installation order. First, run the Driver Installer Program before plugging in the USB to Serial adapter. If you already plug the device during the driver installation, you need to re-plug the device for Windows to enumerate the device and load the drivers installed. If your device is embedded to the system, you might need to restart the system (or click rescan hardware changes in Device Manager) to reload and install the driver.

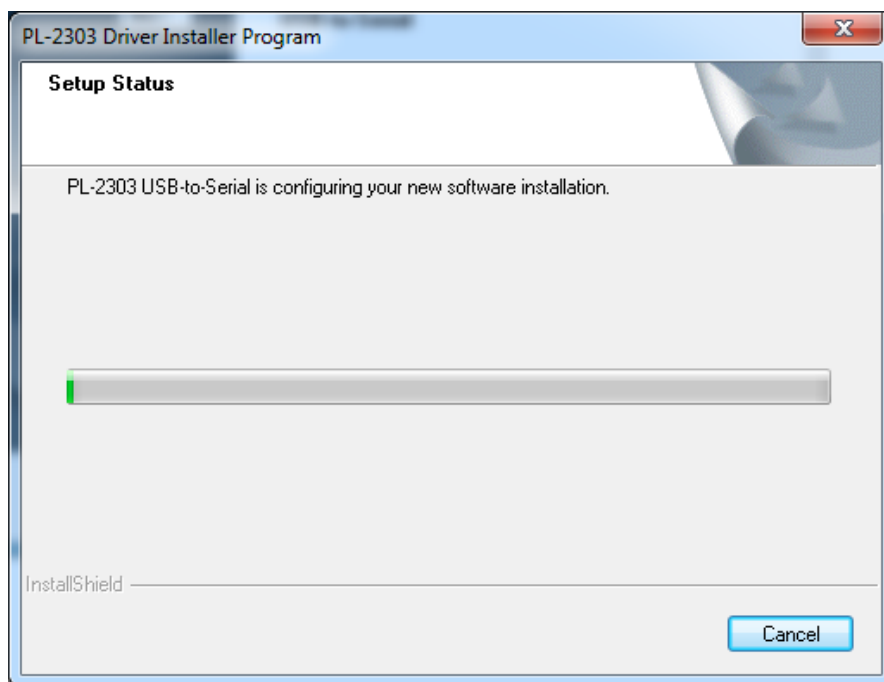
The following steps will show how to install the device under **Windows 7 (64-bit)** OS as this is the most inquired driver installation support received by Prolific. The procedures are the same and straightforward for all other supported Windows operating system versions.



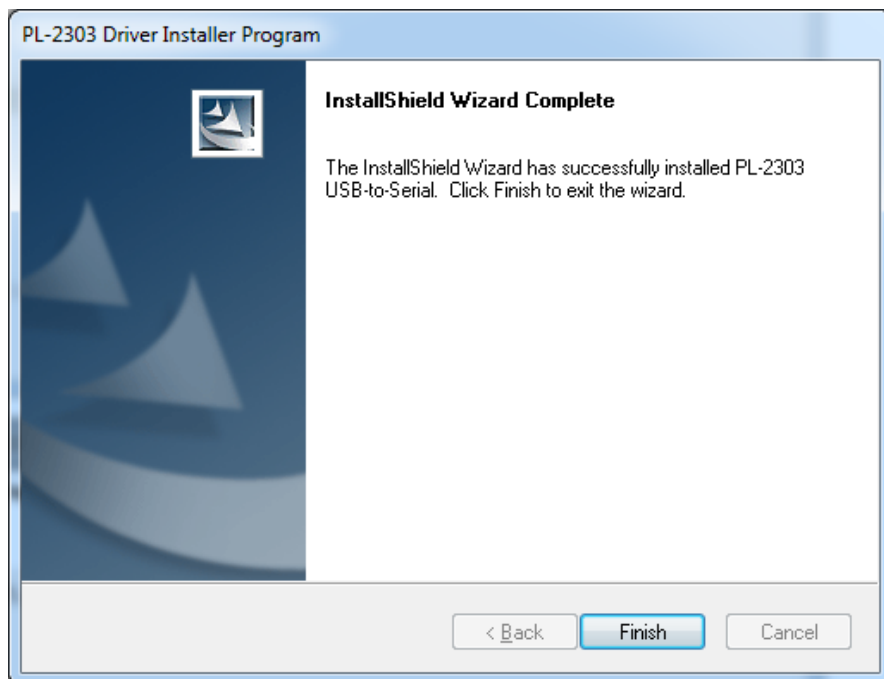
1. Power on your computer and boot to Windows. Run or double-click the PL-2303 Windows Driver Installer program.
2. The InstallShield Wizard will be displayed to inform you that the PL-2303 USB-to-Serial driver will be installed on your computer. Click Next to continue.



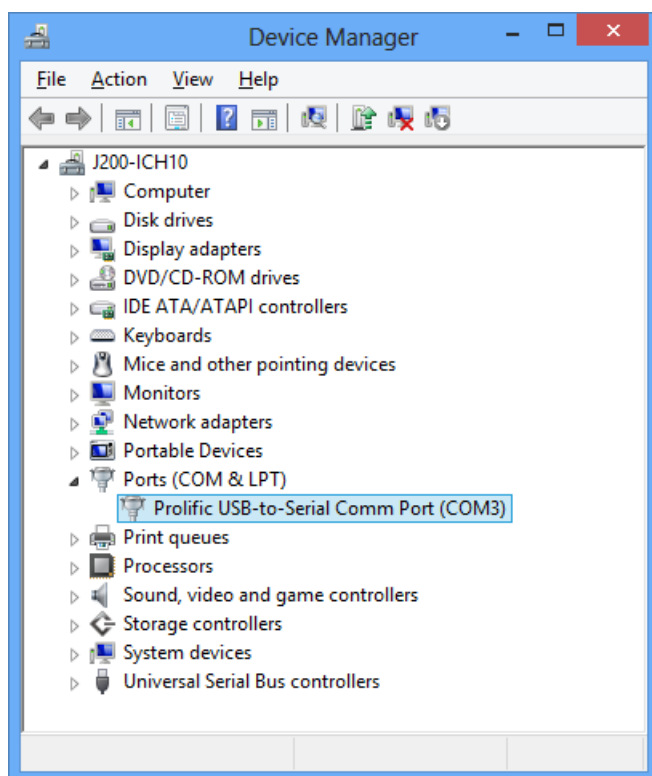
3. The PL-2303 Driver Installer program will then start to install the drivers needed.



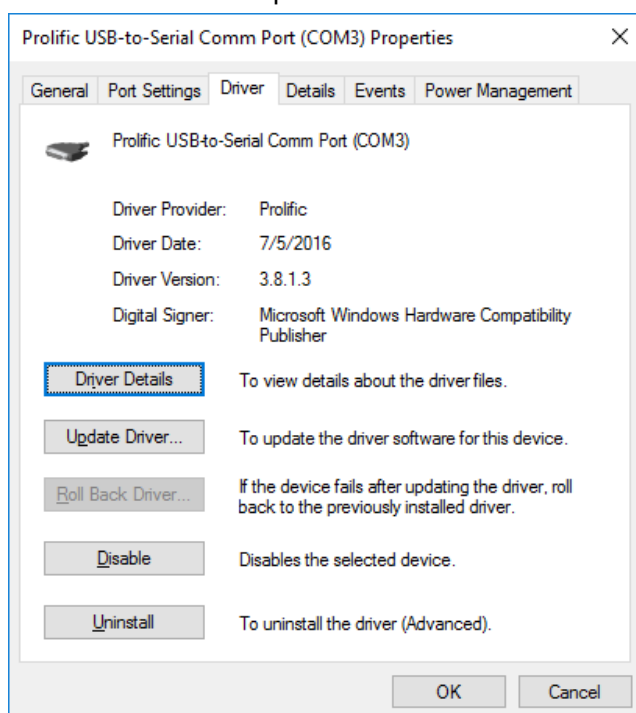
4. Click the Finish button to close the InstallShield program. If you have plugged the cable into the PC while running the setup installation, please unplug and replug the cable for the system to detect the device.



5. Plug in the USB to Serial adapter to the PC USB port. Windows should detect the driver as Prolific USB-to-Serial Comm Port. Go to Device Manager and check for the "Prolific USB-to-Serial Comm Port" device and the COM port number assigned by Windows.

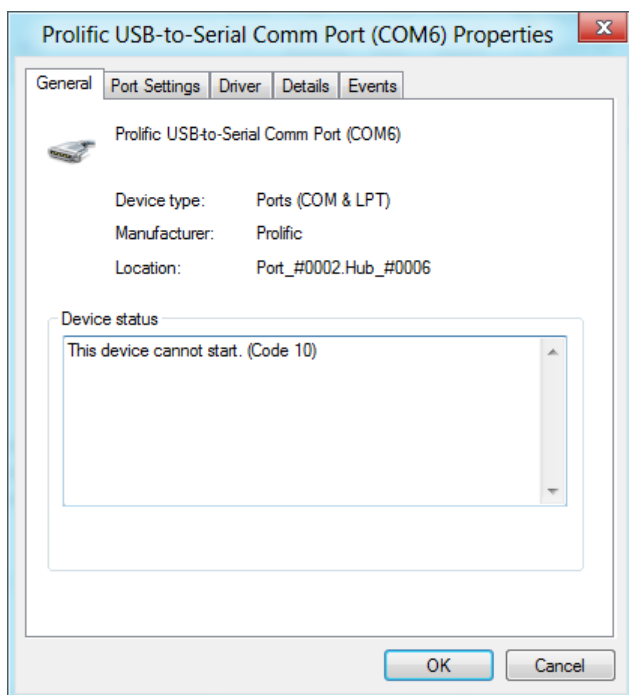
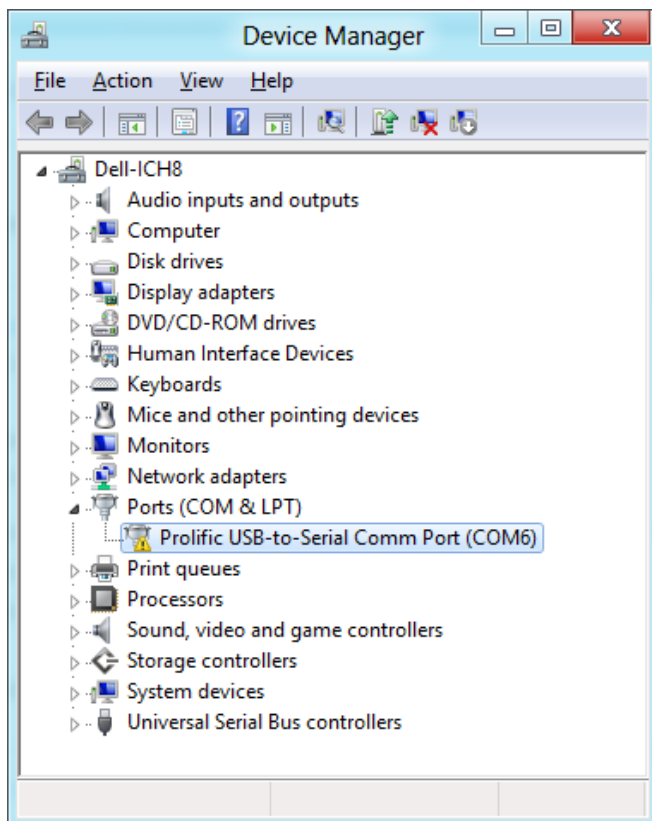


6. You can also check the driver version by right-clicking on the "Prolific USB-to-Serial Comm Port" device and select Properties and Driver tab.



## Warning!!!

If you are encountering yellow mark (Error Code 10) for device in Device Manager under Windows XP, Vista, or Windows 7, you need to contact the cable vendor or manufacturer for possible counterfeit chip. Prolific does not manufacture or sell any end-user market products and will not provide or be responsible for direct support to end-users.

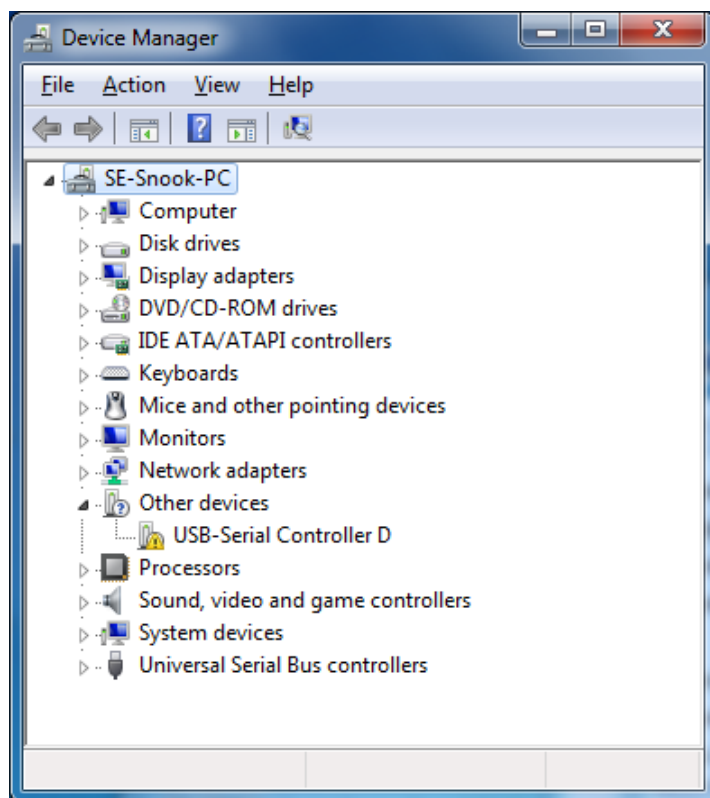


## Windows Driver Installation (via Windows Update)

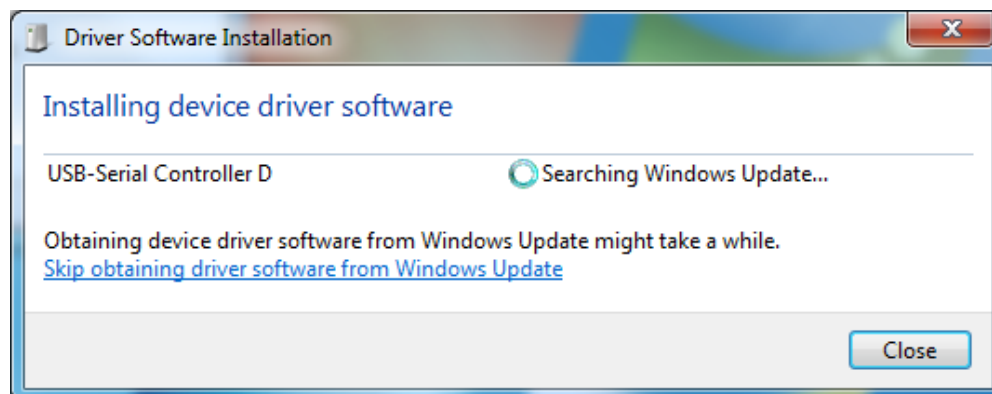
This section guides you on how to install the PL-2303 Windows Driver via Windows Update. You will need an Internet connection to automatically download and install the drivers via Windows Update:

Operating Systems	Windows 7 (32 & 64 bit)	Windows 8 / 8.1 (32 & 64 bit)	Windows 10 Server 2016 (32 & 64 bit)
Windows Update	<input checked="" type="checkbox"/>	<input checked="" type="checkbox"/>	<input checked="" type="checkbox"/>

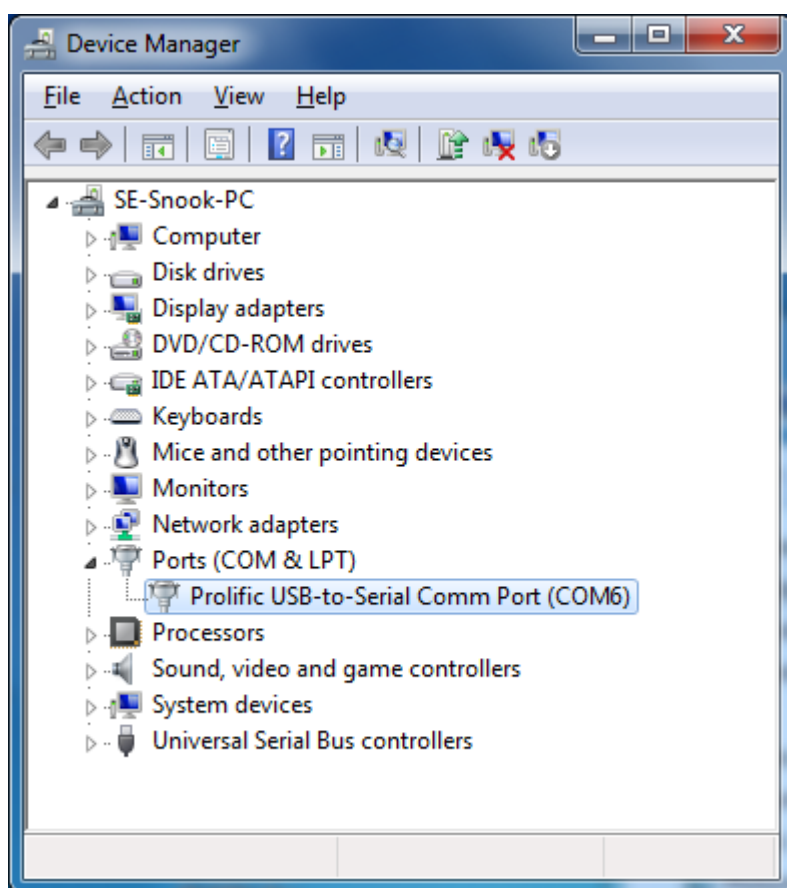
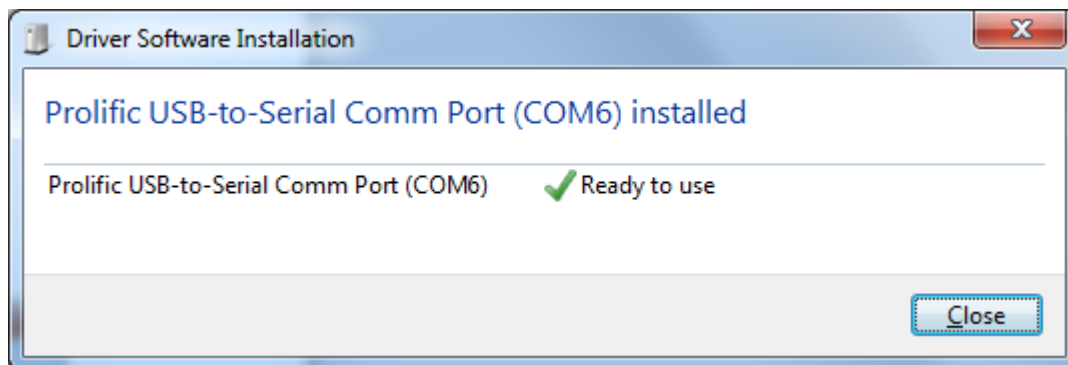
1. Check if your Internet connection is OK. Plug in PL-2303 USB to Serial cable.



2. Windows will automatically check Windows Update if driver is available and will download and install the driver instantly.

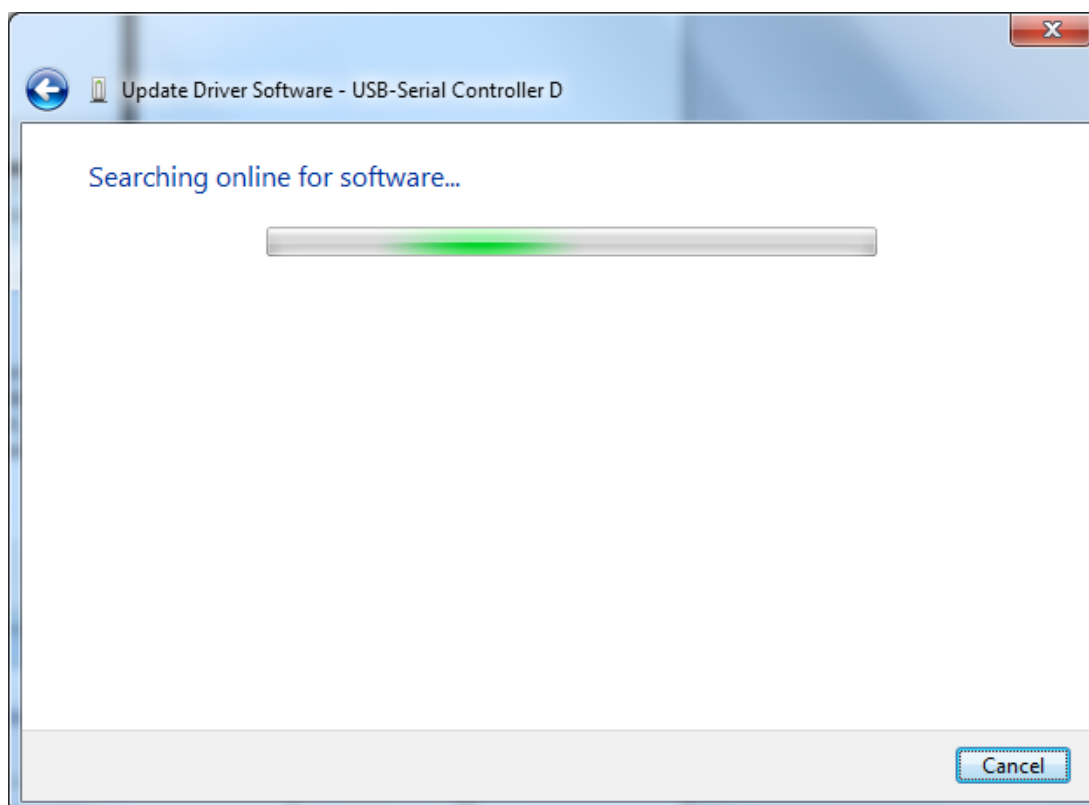
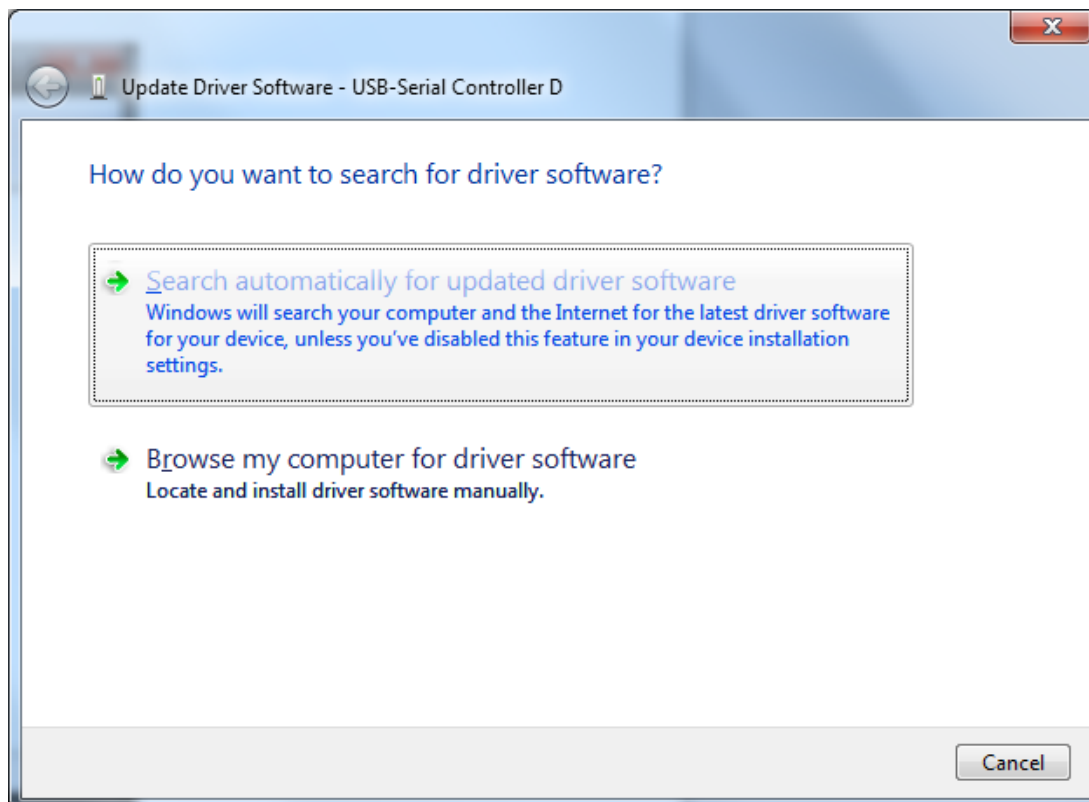


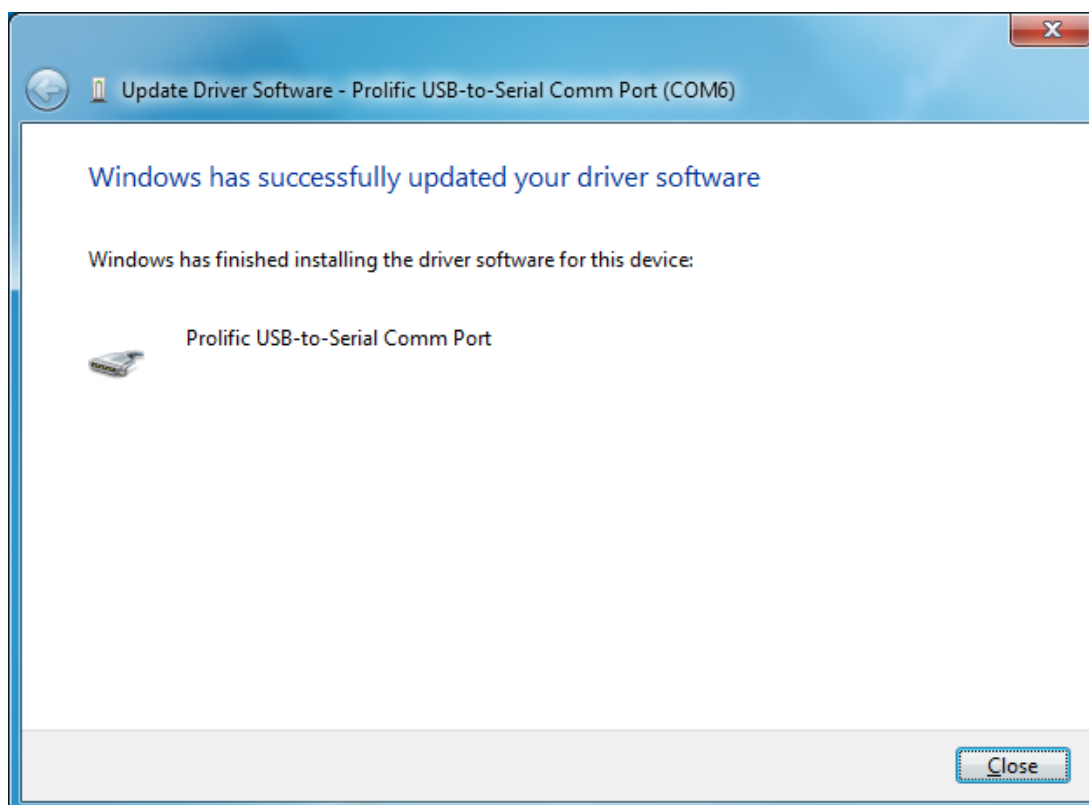
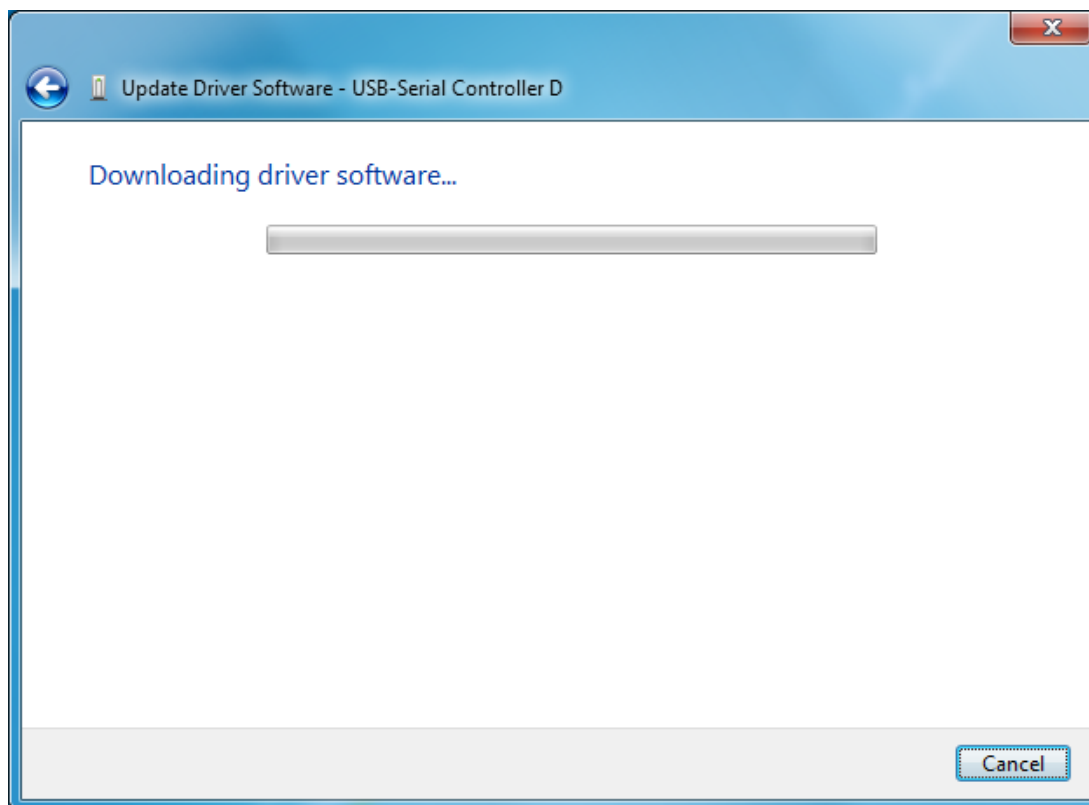
- Windows will then prompt you that Prolific USB-to-Serial Comm Port (COMx) is installed and ready to use.





4. You can also right-click on the USB-Serial Controller device and click Update Driver.





## Windows 8/8.1/10 Supported Chip Versions

This section will guide you on what PL-2303 chip versions are supported by Prolific in Windows 8:

Chip Version	Chip Availability	Windows 8/8.1/10 (32 & 64 bit)
PL-2303H	Discontinued (EOL)	No New Driver Support*
PL-2303HX (Rev A) or HXA	Discontinued (EOL)	No New Driver Support*
PL-2303X or XA	Discontinued (EOL)	No New Driver Support*
PL-2303HX (Rev D) or HXD	Available	Yes
PL2303TA	Available	Yes
PL2303TB	Available	Yes
PL2303EA	Available	Yes
PL2303RA	Available	Yes
PL2303SA	Available	Yes

\* - New Driver does not support PL-2303H, PL2303HX (Rev A), and PL2303X in Windows 8/8.1/10. It will show a yellow mark (Error Code 10) in Device Manager similar to what counterfeit chips would show.

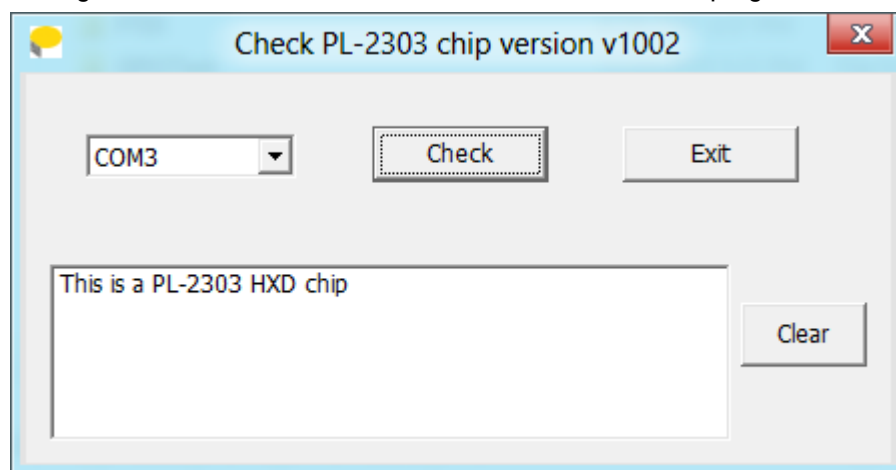
## Check Chip Version Tool

Prolific provides a tool program inside the driver package to check the chip version of your device:

[http://www.prolific.com.tw/US/ShowProduct.aspx?p\\_id=225&pcid=41](http://www.prolific.com.tw/US/ShowProduct.aspx?p_id=225&pcid=41)

### NOTE:

This tool will not work in Windows 8/8.1/10 if the PL-2303 device shows a yellow mark in Device Manager. You need to use Windows 7 or XP to run the tool program for discontinued chip versions.



## Windows 8/8.1/10 Driver Installation

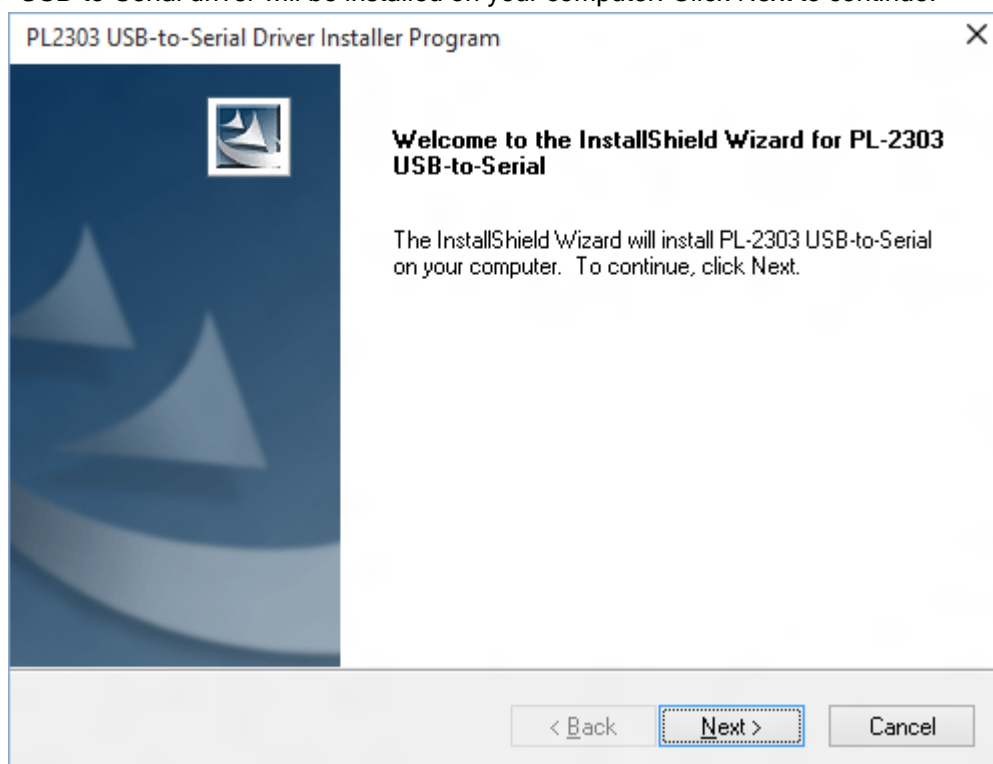
This section shows how to install the PL-2303 device in Windows 8 or 8.1 or 10 Operating System.

You can download the latest Driver Installer program from Prolific Support website:

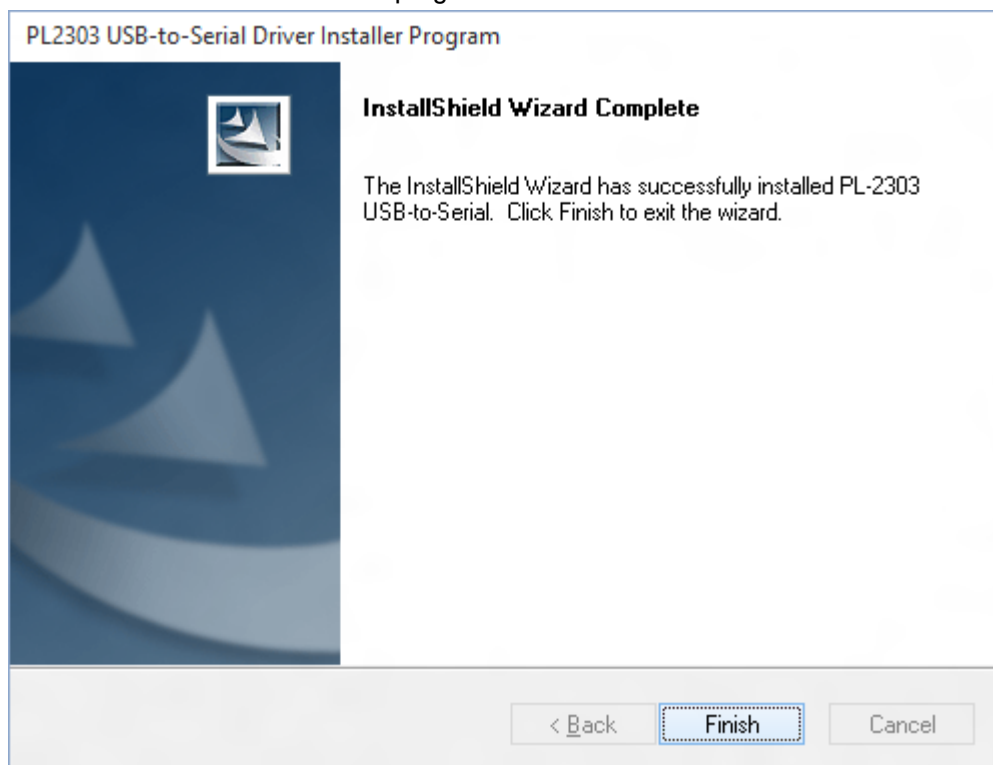
[http://www.prolific.com.tw/US/ShowProduct.aspx?p\\_id=225&pcid=41](http://www.prolific.com.tw/US/ShowProduct.aspx?p_id=225&pcid=41)



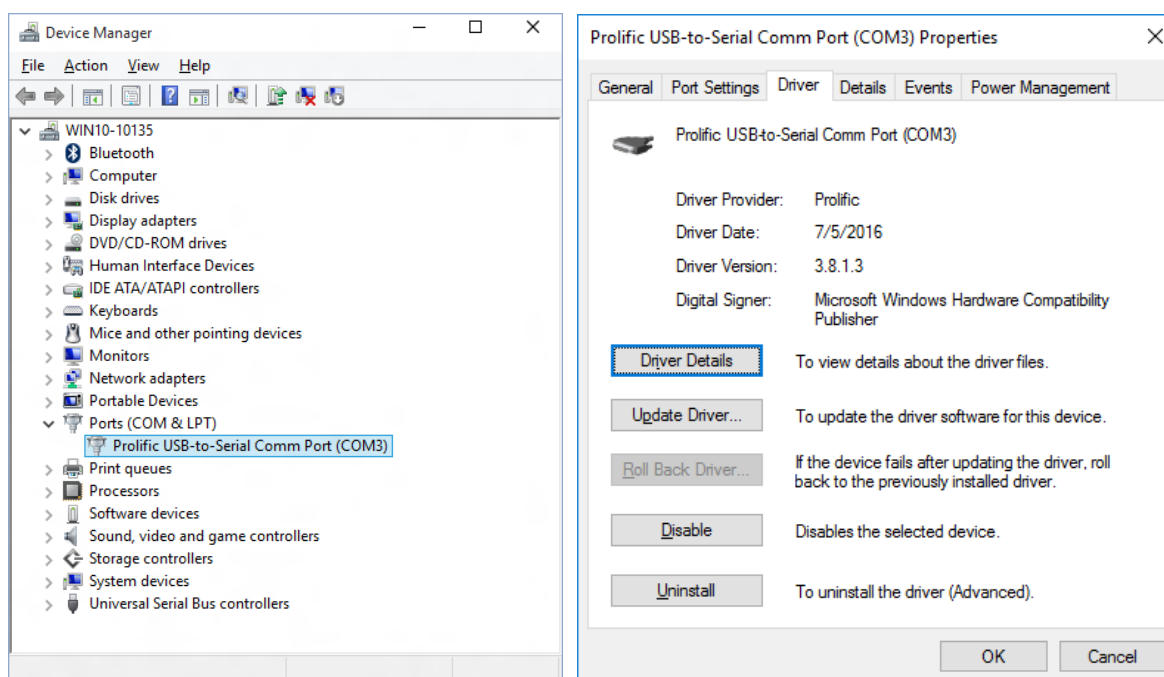
1. Power on your computer and boot to Windows. Run or double-click the PL-2303 Windows Driver Installer program. The InstallShield Wizard will be displayed to inform you that the PL-2303 USB-to-Serial driver will be installed on your computer. Click Next to continue.



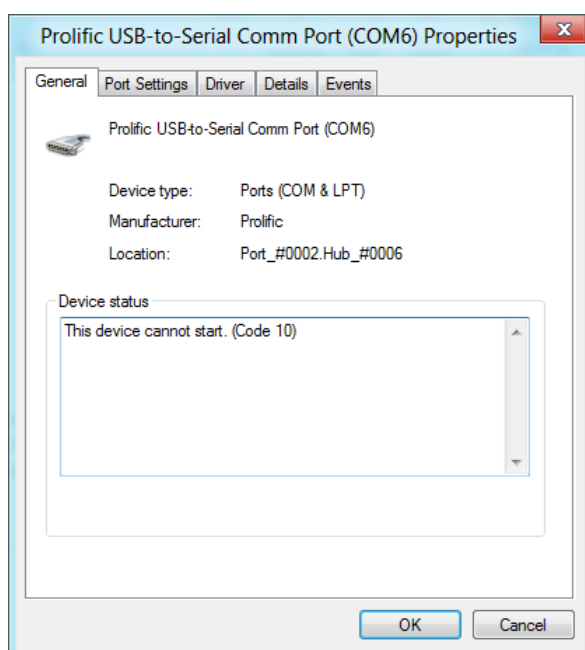
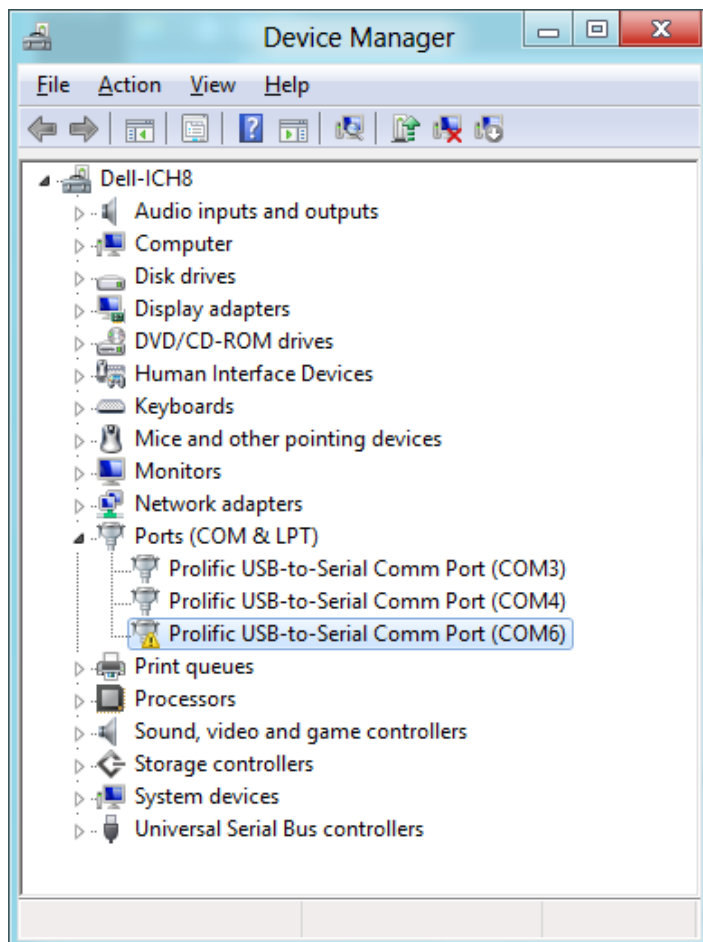
- The PL-2303 Driver Installer program will then start to install the drivers needed. Click the Finish button to close the InstallShield program.



- Plug in the USB to Serial adapter to the PC USB port. Windows should detect the driver as "Prolific USB-to-Serial Comm Port". Go to Device Manager and check for the device and the COM port number assigned by Windows. You can also check the driver version by right-clicking on the "Prolific USB-to-Serial Comm Port" device and select Properties and Driver tab.



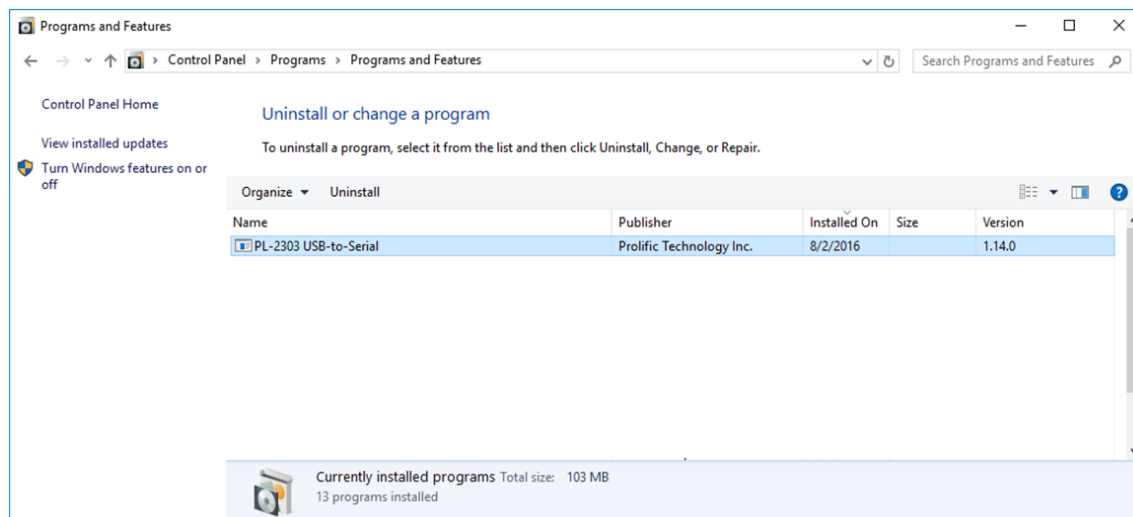
4. The COM Port number for the PL-2303 is assigned by the Windows Operating System. If you encounter a device that shows a yellow mark (Error Code 10), you need to check if that device is using an old version Prolific chip (PL-2303HXA or PL-2303XA) or a counterfeit chip. As mentioned in the previous sections, Prolific does not support old version chips in Windows 8.



## Uninstalling the PL-2303 Driver

To uninstall the PL-2303 driver, follow the below steps:

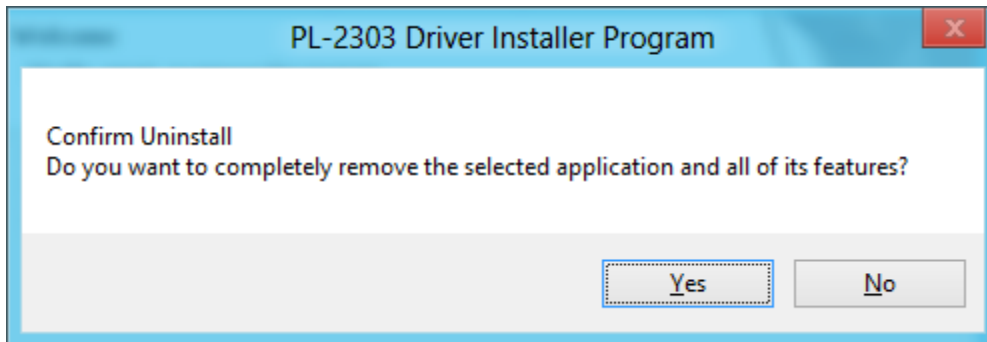
1. Click Start - Control Panel - Programs - Programs and Features - Uninstall a Program. Look for the "PL-2303 USB-to-Serial" program and click the Uninstall (Remove) button.



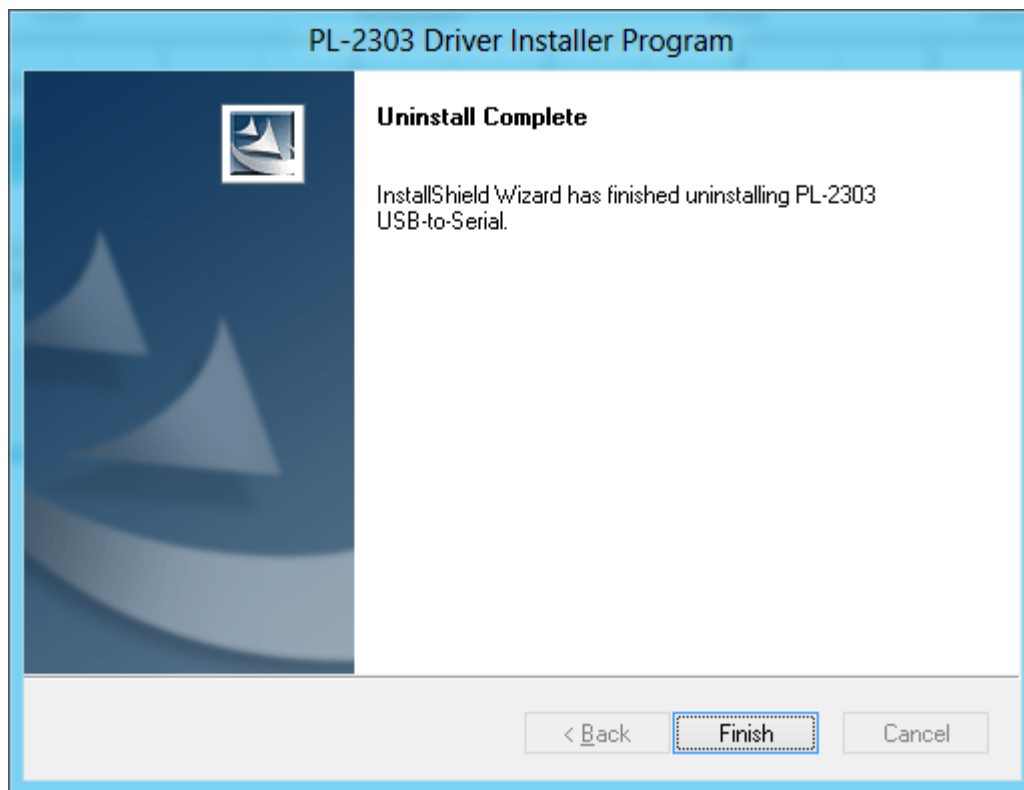
2. InstallShield Wizard will then start the maintenance program and will prompt you to choose if you want to modify, repair, or remove the driver. Click the Remove button and click Next to begin the driver uninstall.



3. The InstallShield Wizard will prompt you to confirm to uninstall. Click Yes to continue.



4. Wait for the InstallShield Wizard to complete the uninstall process. When complete, click Finish to end the program. Wait for some few seconds until the "PL-2303 USB-to-Serial" program is removed from the Control Panel Uninstall (Add or Remove Programs) program list.





5. If you are using Windows Server versions, you may need to do this extra step if driver is not completely uninstalled. Plug back the PL2303 device to the computer and go to Device Manager and right-click "Prolific USB-to-Serial Comm Port". Click Uninstall and click enable the checkbox "Delete the driver software for this device". Click OK to completely uninstall the driver.

